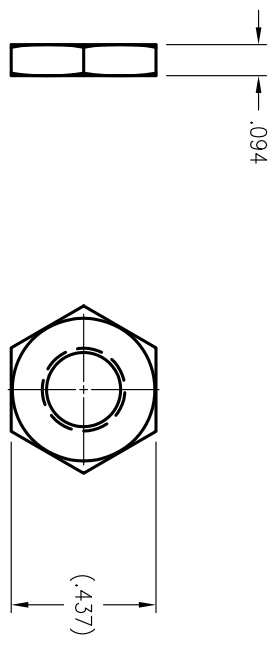
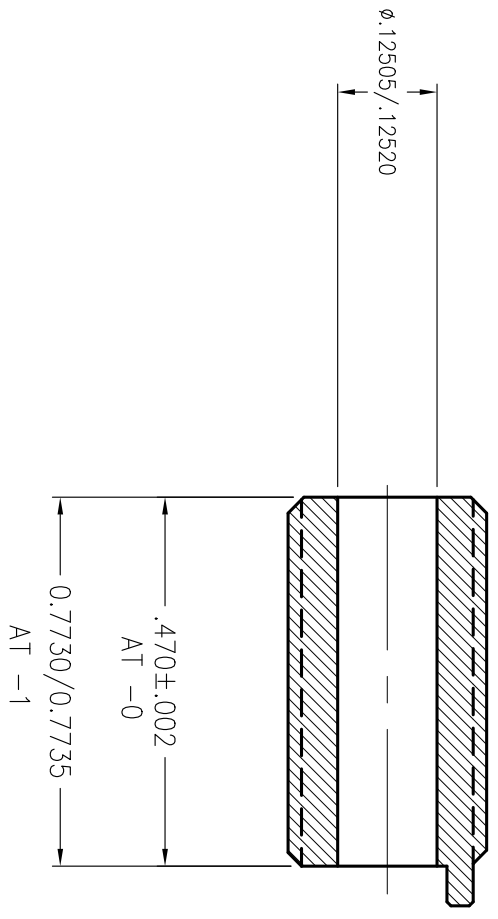
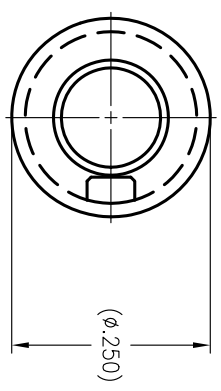
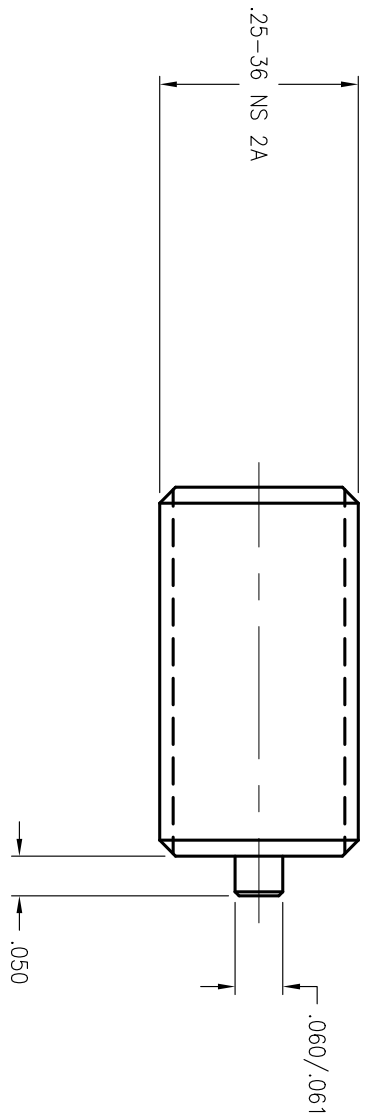


QTY	PART NUMBER	DESCRIPTION	ITEM
-0	1	0205-5560	RECEIVER, SMA, COPPER KEYED .470
-1	1	0205-5561	RECEIVER, SMA, COPPER KEYED .7730
1	2825-0002	NUT, .25-36	3
1	2835-0014	CAP, PROTECTIVE	4
			5



**SUPPLIED WITH LOCKNUT
(NOT TO SCALE)**
MATERIAL: STAINLESS STEEL 303



PART No.	DESCRIPTION
-0	LENGTH = .470
-1	LENGTH = 0.7730"

REV 2 4/25/05: ADD TABULATION AND .773 LENGTH SIZE

NEXT ASSEMBLY

DIMENSIONS ARE IN INCHES

TOLERANCES:
 .X ± ANGLES
 .XX ± .02 ± 1 DEG.
 .XXX ± .005 FINISH
 32 ✓
 DO NOT SCALE DRAWING

RECEIVER, SMA, KEYED

RICHARD LOSCH, Inc.

SCALE: DRAWN BY: DATE: CHECKED: APPROVED:
 6x R. LOSCH 10/28/02
 MATERIAL: COPPER ALLOY C182
 FINISH: NONE

Bend, Oregon (541) 385-0170
 DWG
A 0020-041X
 REV 2