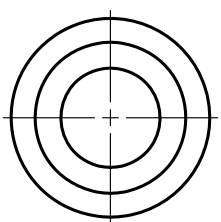
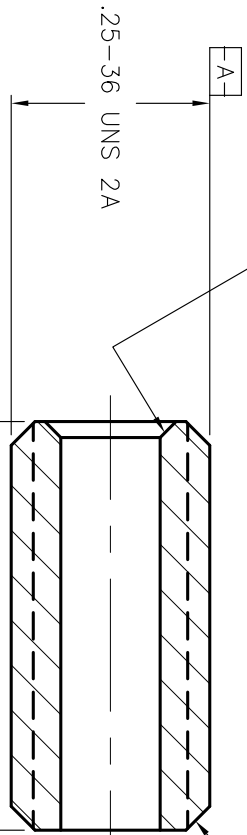


ITEM	DESCRIPTION	QTY	PART NUMBER
-7	BUSHING, THREADED, .370" LONG	1	0205-3731
-6	BUSHING, THREADED, .516" LONG	1	0205-3732
-5	BUSHING, THREADED, .7730" LONG	1	0205-3733
-3	NUT, .25-36 UNS S&TL 7/16" HEX	1	2825-0002
-2	CAP, PROTECTIVE, VINYL, .25"	1	2835-0014
	BUSHING, THREADED, .370" LONG	1	0205-8311
	BUSHING, THREADED, .516" LONG	1	0205-8312
	BUSHING, THREADED, .7730" LONG	1	0205-8313

.020 X 45°
ONE END ONLY

.025 X 45° 2PL



LENGTH PER TABULATION

STAINLESS STEEL

PART No.	DESCRIPTION
-0401	.370
-0402	.516
-0403	.7730/.7735

COPPER

PART No.	DESCRIPTION
-0405	.370
-0406	.516
-0407	.7730/.7735
-0408	.780

**BUSHING, THREADED
SMA 905**

RICHARD LOSCH, Inc.
Bend, Oregon (541) 385-0170

SCALE: NTS
MATERIAL: STAINLESS STEEL / COPPER ALLOY
FINISH: NONE

DATE: 2.05.94
CHECKED: APPROVED:

DWG: A
REV: 1

DO NOT SCALE DRAWING

NEXT ASSEMBLY

DIMENSIONS ARE IN INCHES
TOLERANCES:
.X ± ANGLES
.XX ± 1 DEG.
.XXX ± .005 FINISH
32